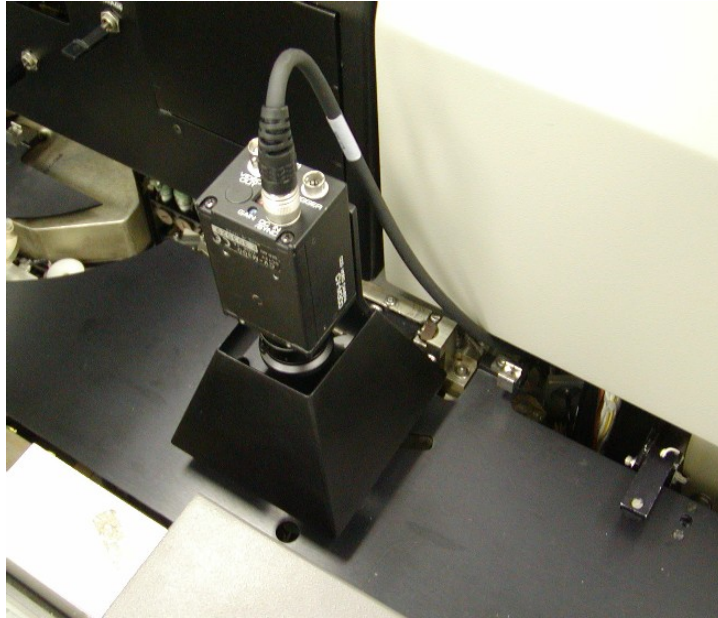


Cognex PreAligner Head OS2000 Assembly



Our Cognex Prealigner Assembly¹ for your Micralign™ employs a camera that is able to view the entire wafer, thus eliminating the discrete detectors (A-D). Teamed with our OS2000 Operating System, this allows for:

- Transparent or semi-transparent substrates
- Alternate flat orientations
- Multiple size handling (for Combo machines)
- Center-based PreAlignment

Contact Tony Santospirito for a quote at:
asantospirito@betasquaredlithography.com
tel: (203) 775-4242 ext. 107



Beta Squared Lithography Inc.

¹ Requires Control Panel Upgrade (9-400-0132)